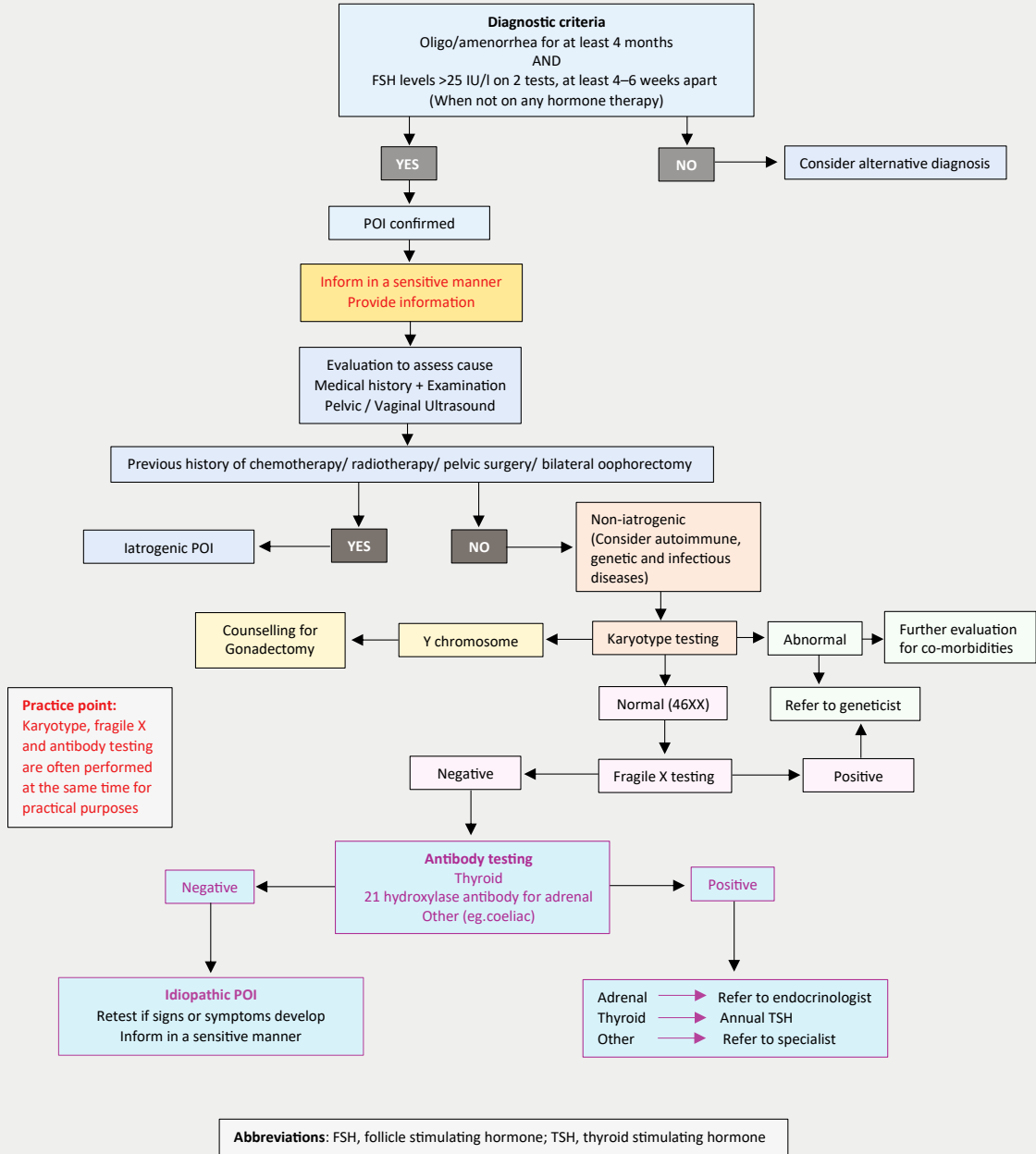


Management algorithm for diagnosis/evaluation of premature ovarian insufficiency (POI)

Premature ovarian insufficiency (POI) is defined as loss of ovarian function under age 40 years



This Early menopause algorithm is protected by copyright. It is made available for unlimited, free, worldwide personal use by healthcare providers involved in the care of women with early menopause, and may only be reproduced in a printed publication or online with the consent of the Monash Centre for Health Research and Implementation (MCHRI) and with this notice intact. This algorithm represents a summary of best available evidence. MCHRI should not be taken to endorse or recommend any test, treatment or medication by reason of it being referred to in the algorithm.

Figure 1. Premature ovarian insufficiency diagnosis evaluation algorithm

Reproduced with permission from Monash Centre for Health Research and Implementation (MCHRI), Monash University, Clayton, Victoria, Australia (www.monash.edu/medicine/sphpm/mchri/research/themes/womens-and-childrens-public-health/early-menopause-research). Copyright © MCHRI.